

| Stravinsky | Pulcinella

Vivo

ff sf sf fff

fff

f sim. gliss. ff

fff

fff

fff détaché

dolce

p

ff risoluto, energico

Mahler — Symphony No. 1 in D Major

6

Contrabass.

III. Satz.

Feierlich und gemessen, ohne 'zu schleppen.

1 (Pauken)

pp *p* mit Dämpfer

Alle

Saint-Saens — Carnival of the Animals

2

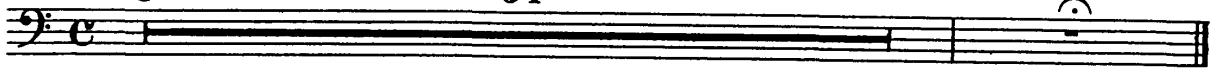
CONTREBASSE

N° 2

Poules et Coqs

Allegro moderato

34



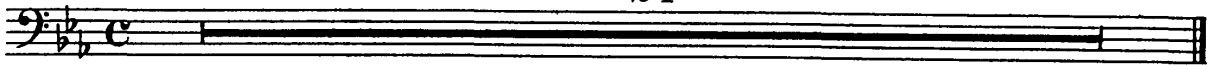
N° 3

Hémiones

(Animaux véloces)

Presto furioso

24



N° 4

Tortues

Andante maestoso

1^{er} Piano

C. BASSE



N° 5

L'Éléphant

Allegretto pomposo

2^d Piano

C. BASSE SOLI



Saint-Saens — Carnival of the Animals

CONTREBASSE

3

Musical score for Contrabass, measures 1-5. The score is in bass clef with a key signature of two flats (B-flat and E-flat). Measure 1 starts with a mezzo-forte (*mf*) dynamic. Measure 2 contains a circled number '2'. Measure 3 contains a circled number '3' and a forte (*f*) dynamic. Measure 4 contains a circled number '4' and a fortissimo (*ff*) dynamic. Measure 5 ends with a double bar line.

N° 6

Kangourous

Musical score for Kangourous. The tempo is Moderato. The score is in bass clef with a key signature of two flats. It consists of six measures with various time signatures: 3/4, 3/4, 3/4, 3/4, C, and 3/4. The measures contain rhythmic patterns with circled numbers 1 and 2, and a circled number 5. The piece ends with a fermata.

N° 7

Aquarium

Musical score for Aquarium. The tempo is Andantino. The score is in bass clef with a common time signature (C). It consists of a single measure with a fermata at the end.

N° 8

Personnages à longues oreilles

Musical score for Personnages à longues oreilles. The tempo is Tempo ad lib. The score is in bass clef with a 3/4 time signature. It consists of two measures, each ending with a fermata.

N° 9

Le Coucou au fond des bois

Musical score for Le Coucou au fond des bois. The tempo is Andante. The score is in bass clef with a key signature of three sharps (F#, C#, G#) and a 3/4 time signature. It consists of two measures, each ending with a fermata.